



Product Information

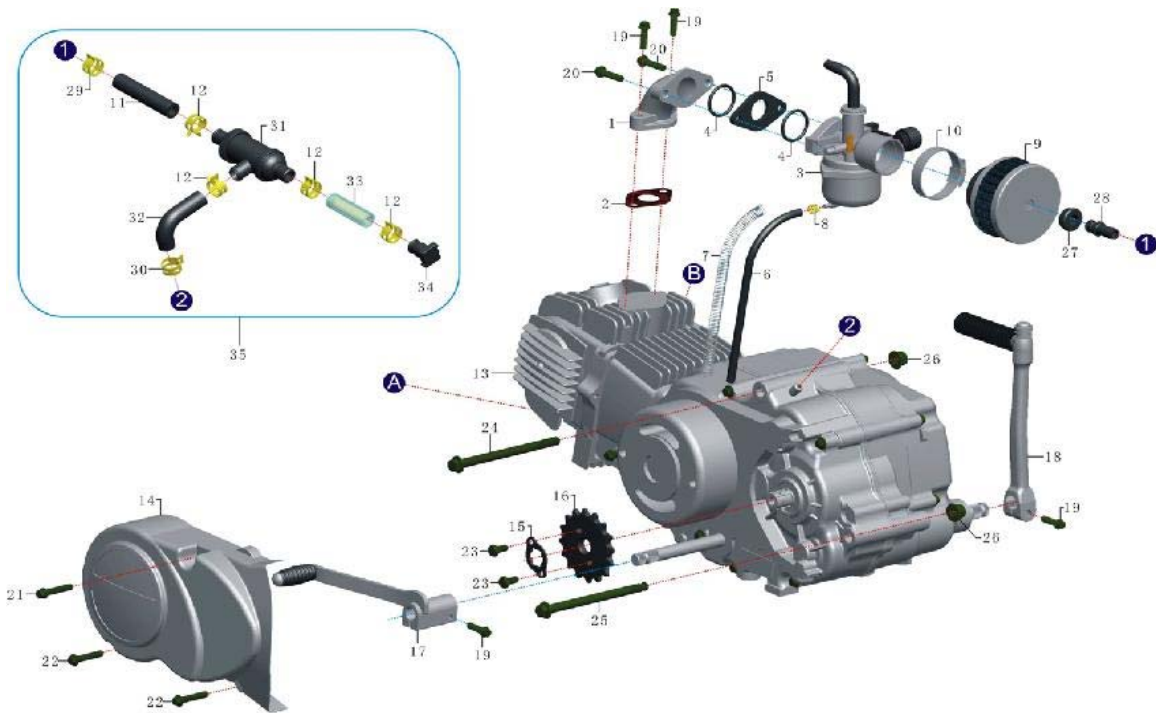
[Baja Web](#) > [Product Information](#) > [Parts Lists](#) > [DIRTBIKE](#) > DR50-XR Xmoto 49cc Dirt Bike (VIN PREFIX L98B)

## DR50-XR Xmoto 49cc Dirt Bike (VIN PREFIX L98B)

DR50-XR Xmoto 49cc Dirt Bike (VIN PREFIX L98B)



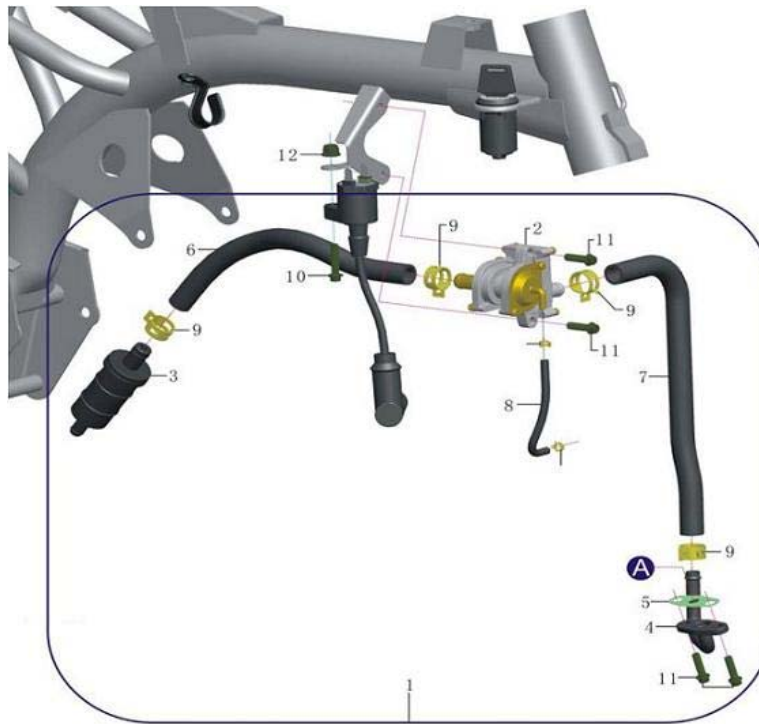
Engine [Image]



**ENGINE**

Item No	Part Number	Description	Qty
	DR50X-126	SPARK PLUG	1
1	DR50X-100	MANIFOLD, AIR INTAKE	1
2	DR50X-101	GASKET, AIR INTAKE 1	1
3	DR50X-102	CARBURETOR PZ19, KF (EPA)	1
4	DR50X-103	O-RING, CARBURETOR, (RUBBER)	2
5	DR50X-104	SPACER, (COMPOSITE PLASTIC)	1
6	DR50X-105	HOSE, OVERFLOW	1
7	DR50X-106	CLAMP, HOSE Ø6	1
8	DR50X-107	AIR FILTER	1
9	DR50X-108	CLAMP, DUCT	1
13	DR50X-112	ZS 50CC KICK START, SEMI AUTO	1
14	DR50X-113	COVER, CHAIN	1
15	DR50X-114	LOCKING WASHER, SPROCKET	1
16	DR50X-115	SPROCKET, ENGINE 420-14T	1
17	DR50X-116	LEVER, GEAR SHIFT	1
18	DR50X-117	LEVER, KICK START	1
19	DR50X-118	BOLT, FLANGED M6*20	4
20	DR50X-119	BOLT, FLANGED M6*25	2
21	DR50X-120	BOLT, FLANGED M6*35	1
22	DR50X-121	BOLT, FLANGED M6*30	2
23	DR50X-122	BOLT M6*8	2
24	DR50X-123	BOLT, FLANGED M8*110	1
25	DR50X-124	BOLT, FLANGEDM8*105 (GB/T5787)	1
26	DR50X-125	NUT, FLANGED, LOCKING M8	2
27	DR50X-127	GROMMET	1
28	DR50X-128	AIR INTAKE PIPES	1
35	DR50X-135	AIR/OIL SEPERATOR ASSY.	1

**Emissions [Image]**



**EMISSIONS**

Item No	Part Number	Description	Qty
1	DR50X-136	ACTUATOR VALVE ASSY.	1
5	DR50X-140	WASHER	1
9	DR50X-144	CLAMP, HOSE $\Phi$ 11	4
10	DR50X-145	BOLT, FLANGED M6*25	1
11	DR50X-146	BOLT, FLANGED M6*20	4
12	DR50X-147	NUT, FLANGED, LOCKING M6	1

**Exhaust [Image]**

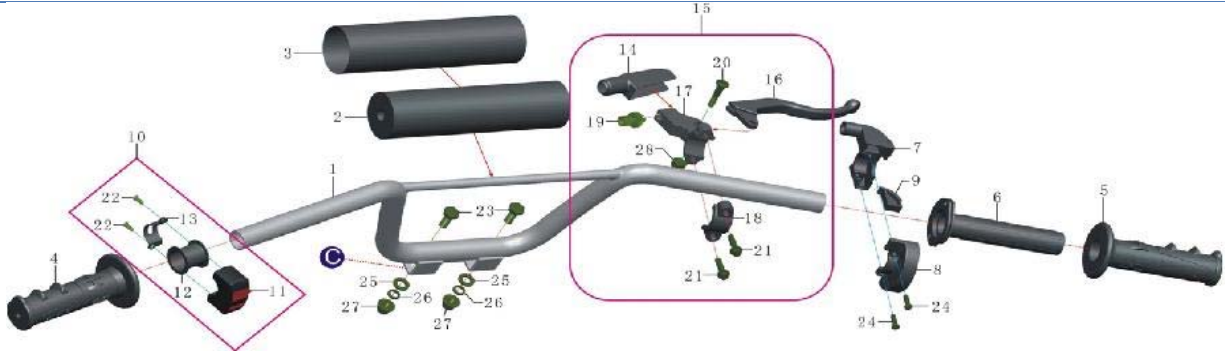


**EXHAUST**

Item No	Part Number	Description	Qty
1	DR50X-149	EXHAUST ASSEMBLY	1

2	DR50X-150	EXHAUST	1
3	DR50X-151	SHIELD, EXHAUST 1	1
4	DR50X-152	SHIELD, EXHAUST 2	2
5	DR50X-153	SEAL, EXHAUST	1
6	DR50X-154	CLAMP, DUCT, EXHAUST	1
7	DR50X-155	CUSHION, BRACKET	1
8	DR50X-156	CAP, FRAME, FRONT	1
9	DR50X-157	BOLT, FLANGED M8*20	1
10	DR50X-158	BOLT, M6*10	7
11	DR50X-159	FLAT WASHER $\Phi 8$	1
12	DR50X-160	LOCK WASHER $\Phi 6$	9
13	DR50X-161	NUT, FLANGED, LOCKING M8	1
14	DR50X-162	BOLT, M6*21	2

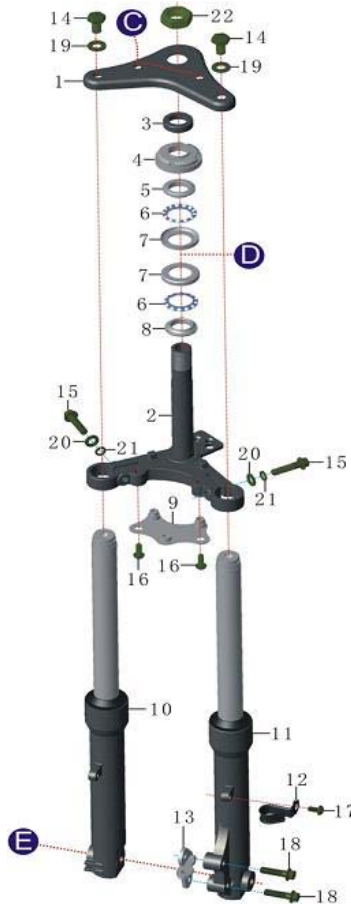
Handlebar [Image]



HANDLEBAR

Item No	Part Number	Description	Qty
1	DR50X-163	HANDEL BAR	1
2	DR50X-164	FOAM PADDING, CROSSBAR	1
3	DR50X-165	COVER, FOAM PADDING	1
4	DR50X-166	GRIP, LH	1
5	DR50X-167	GRIP, RH	1
6	DR50X-168	INSERT THROTTLE HANDLE	1
7	DR50X-169	HOUSING, THROTTLE, TOP	1
8	DR50X-170	HOUSING, THROTTLE, BOTTOM	1
9	DR50X-171	GUIDE, THROTTLE CABLE	1
10	DR50X-172	STOP SWITCH ASSY.	1
12	DR50X-174	SLEEVE, STOP SWITCH	1
15	DR50X-177	LEVER, BRAKE ASSY.	1
16	DR50X-178	LEVER, BRAKE	1
23	DR50X-185	BOLT M8*20	2
24	DR50X-186	BOLT M5*16	2
25	DR50X-187	FLAT WASHER $\Phi 8$	2
26	DR50X-188	LOCK WASHER $\Phi 8$	2
27	DR50X-189	NUT, FLANGED, LOCKING M8	2

Forks [Image]



**FORKS**

Item No	Part Number	Description	Qty
1	DR50X-190	TRIPLE CLAMP, TOP	1
2	DR50X-191	TRIPLE CLAMP, BOTTOM	1
3	DR50X-192	SPACER $\phi 22.5 \times \phi 25.5 \times \phi 30 \times 9$	1
4	DR50X-193	LOCKING NUT M22	1
5	DR50X-194	BEARING ASSEMBLY	1
9	DR50X-198	BRACKET, FENDER, FRONT	1
10	DR50X-199	TELESCOPIC, STANDARD, RH	1
11	DR50X-200	TELESCOPIC, STANDARD, LH	1
12	DR50X-201	BRACKET, CABLE	1
13	DR50X-202	BRACKET, BRAKE DRUM	1
14	DR50X-203	BOLT M10*20	2
15	DR50X-204	BOLT, FLANGED M8*35	2
16	DR50X-205	BOLT M6*16	2
17	DR50X-206	BOLT M6*12	1
18	DR50X-207	BOLT, FLANGED M8*30	2
19	DR50X-208	FLAT WASHER $\phi 10$	2
20	DR50X-209	FLAT WASHER $\phi 8$	2
21	DR50X-210	LOCK WASHER $\phi 8$	2
22	DR50X-211	NUT, M22	1

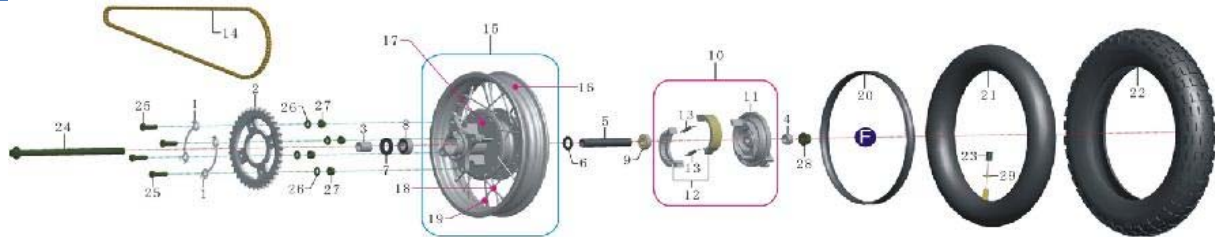
**Front Rim [Image]**



**FRONT RIM**

Item No	Part Number	Description	Qty
1	DR50X-212	BRAKE DRUM ASSY. FRONT	1
2	DR50X-213	HOUSING, BRAKE SHOES	1
3	DR50X-214	BRAKE SHOES	1
4	DR50X-215	SPRING, SHOES	2
5	DR50X-216	FRONT RIM BEARING 6001Z	1
6	DR50X-217	FRONT RIM BEARING 6201-2RS	1
7	DR50X-218	SEAL, DUST 20*32*6	1
8	DR50X-219	CENTERING RING	1
9	DR50X-220	SPACER $\phi 13 \times \phi 16 \times 36$	1
10	DR50X-221	SPACER $\phi 12.5 \times \phi 20 \times 24$	1
11	DR50X-222	RIM ASSY. FRONT, 1.40*10	1
16	DR50X-227	INNER TUBE PROTECTOR BAND	1
17	DR50X-228	INNER TUBE 60/100-10	1
18	DR50X-229	TIRE, FRONT, 10"	1
19	DR50X-230	CAP, AIR VALVE	1
20	DR50X-231	BOLT, FLANGED M12*200	1
21	DR50X-232	NUT, FLANGED, LOCKING M12	1
22	DR50X-233	NUT M8	1

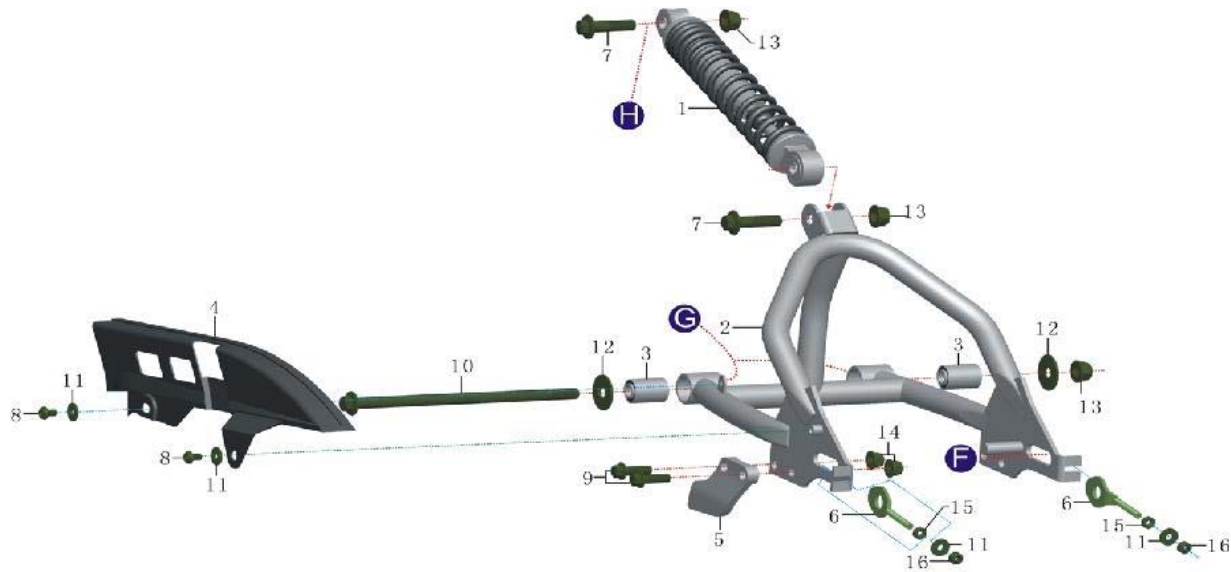
Rear Rim [Image]



REAR RIM

Item No	Part Number	Description	Qty
1	DR50X-234	LOCKING WASHER, SPROCKET	2
2	DR50X-235	SPROCKET, REAR 420-39T	1
3	DR50X-236	SPACER $\phi 12.5 \times \phi 20 \times 21$	1
4	DR50X-237	SPACER $\phi 12.5 \times \phi 20 \times 10$	1
5	DR50X-238	SPACER $\phi 13 \times \phi 16 \times 95$	1
6	DR50X-239	CENTERING RING	1
7	DR50X-240	SEAL, DUST 20*32*6	1
8	DR50X-241	FRONT RIM BEARING 6201-2RS	1
9	DR50X-242	FRONT RIM BEARING 6001Z	1
10	DR50X-243	BRAKE DRUM ASSY. REAR	1
11	DR50X-244	HOUSING, BRAKE SHOES	1
12	DR50X-245	BRAKE SHOES	1
13	DR50X-246	SPRING, SHOES	2
14	DR50X-247	CHAIN 420-78L	1
15	DR50X-248	RIM, REAR ASSY. 1.40*10"	1
20	DR50X-253	INNER TUBE PROTECTOR BAND	1
21	DR50X-254	INNER TUBE 60/100-10	1
22	DR50X-255	TIRE, FRONT, 10"	1
23	DR50X-256	CAP, AIR VALVE	1
24	DR50X-257	BOLT, FLANGED M12*215	1
25	DR50X-258	BOLT M8*25	4
26	DR50X-259	FLAT WASHER $\phi 8$	4
27	DR50X-260	NUT, LOCKING M8	4
28	DR50X-261	NUT, FLANGED, LOCKING M12	1
29	DR50X-262	NUT M8	1

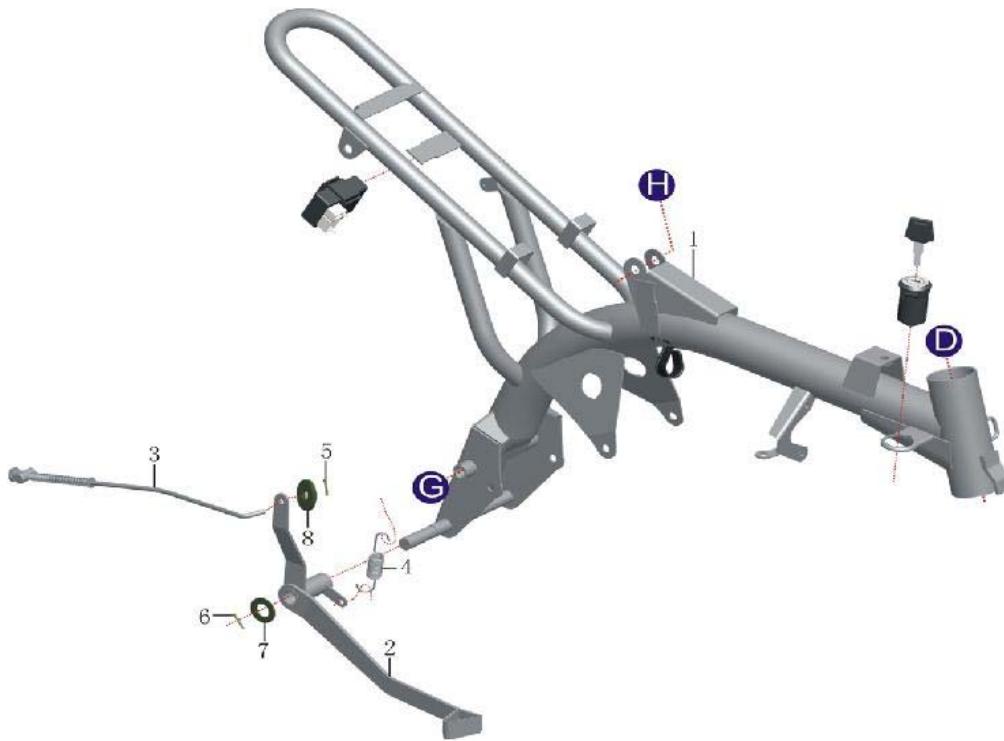
Swing Arm [Image]



**SWING ARM**

Item No	Part Number	Description	Qty
1	DR50X-263	REAR SHOCK L=250MM	1
2	DR50X-264	SWING ARM, REAR	1
3	DR50X-265	BUSHING, SWING ARM	2
4	DR50X-266	GUARD, CHAIN, TOP	1
5	DR50X-267	GUARD, CHAIN, BOTTOM	1
6	DR50X-268	ADJUSTER, WHEEL	2
7	DR50X-269	BOLT, FLANGED M10*40	2
8	DR50X-270	BOLT M6*10	2
9	DR50X-271	BOLT, FLANGED M8*25	2
10	DR50X-272	BOLT, FLANGED M10*200	1
11	DR50X-273	FLAT WASHER $\phi$ 6	4
12	DR50X-274	FLAT WASHER $\phi$ 10	2
13	DR50X-275	NUT, FLANGED, LOCKING M10	3
14	DR50X-276	NUT, FLANGED, LOCKING M8	2
15	DR50X-277	NUT M6	2
16	DR50X-278	NUT, LOCKING M6	2

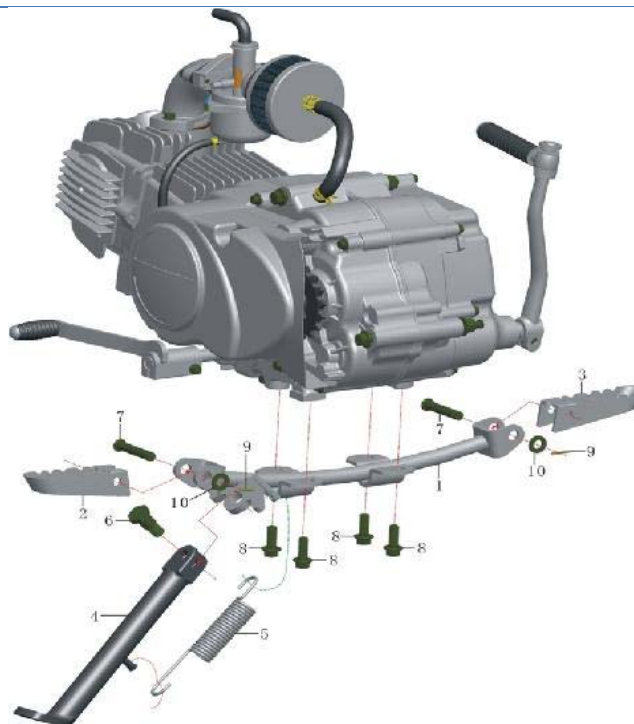
Frame [Image]



**FRAME**

Item No	Part Number	Description	Qty
1	DR50X-279	FRAME	1
2	DR50X-280	LEVER, BRAKE, REAR	1
3	DR50X-281	BRAKE ROD, REAR	1
4	DR50X-282	SPRING, BRACKET, BRAKE, REAR	1
5	DR50X-283	COTTER PIN $\Phi$ 2	1
6	DR50X-284	COTTER PIN $\Phi$ 3	1
7	DR50X-285	FLAT WASHER $\Phi$ 15	1
8	DR50X-286	FLAT WASHER $\Phi$ 6	1

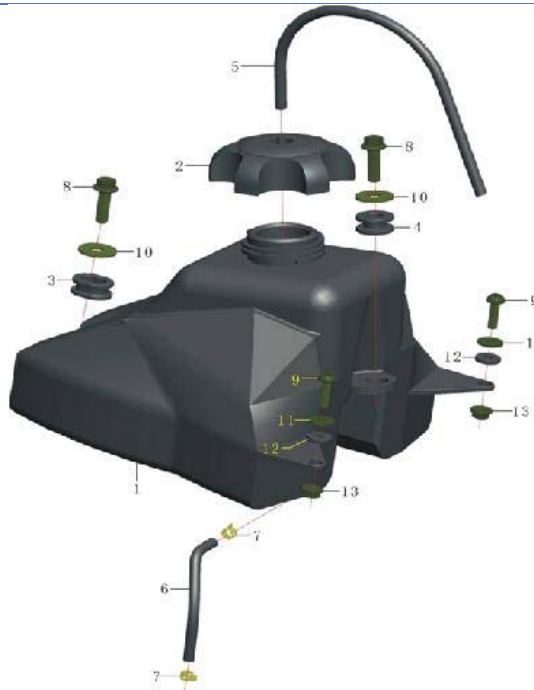
**Footrest [Image]**





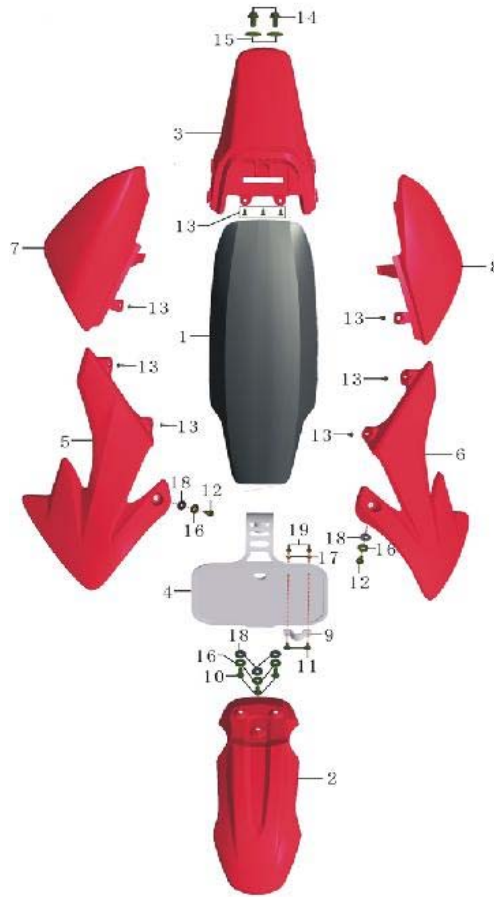
**FOOTREST**

Item No	Part Number	Description	Qty
1	DR50X-287	BRACKET, FOOT REST, ENGINE	1
2	DR50X-288	FOOT REST, LH	1
3	DR50X-289	FOOT REST, RH	1
4	DR50X-290	KICK STAND	1
5	DR50X-291	SPRING, KICK STAND	1
6	DR50X-292	BOLT M10*25	1
7	DR50X-293	PIN, ROD $\phi 8 \times 40$	2
8	DR50X-294	BOLT, FLANGED M8*20	4
9	DR50X-295	COTTER PIN	2
10	DR50X-296	FLAT WASHER $\phi 8$	2

**Fuel Tank [Image]****FUEL TANK**

Item No	Part Number	Description	Qty
1	DR50X-297	FUEL TANK	1
2	DR50X-299	FUEL CAP	1
3	DR50X-301	GROMMET, OVAL	1
4	DR50X-302	GROMMET, OVAL	1
5	DR50X-303	HOSE, BREATHER	1
6	DR50X-304	HOSE, CARBURETOR	1
7	DR50X-305	CLAMP, HOSE $\phi 6$	2
8	DR50X-306	BOLT, FLANGED M8*25	2
9	DR50X-307	BOLT M6*20	2
10	DR50X-308	FLAT WASHER $\phi 8$	2
11	DR50X-309	FLAT WASHER $\phi 6$	2
12	DR50X-310	RUBBER WASHER $\phi 6$	2
13	DR50X-311	NUT M6	2

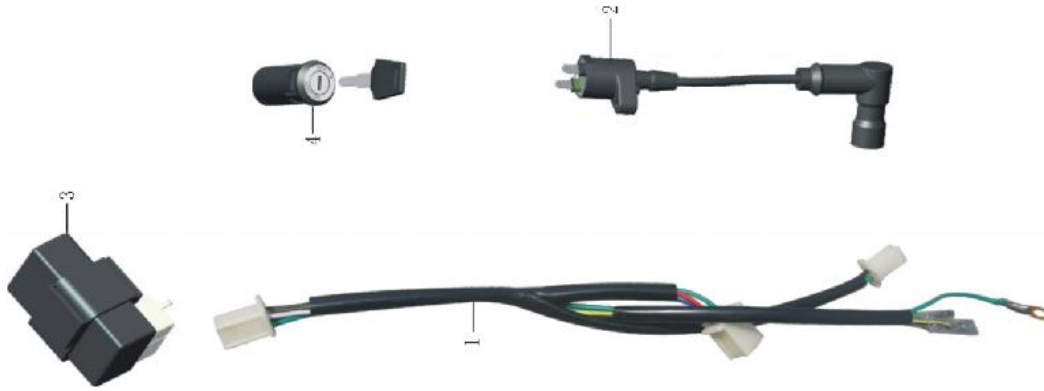
**Fenders [Image]**



**FENDERS**

Item No	Part Number	Description	Qty
1	DR50X-312	SEAT	1
2	DR50X-313	FENDER, FRONT	1
3	DR50X-314	FENDER, REAR	1
4	DR50X-315	FRONT NUMBER PLATE	1
5	DR50X-316	FAIRING, FUEL TANK, RH	1
6	DR50X-317	FAIRING, FUEL TANK, LH	1
7	DR50X-318	FAIRING, REAR, RH	1
8	DR50X-319	FAIRING, REAR, LH	1
9	DR50X-320	BRACKET	1
10	DR50X-321	BOLT M6*16	3
11	DR50X-322	BOLT M5*12	2
12	DR50X-323	BOLT M6*12	2
13	DR50X-324	BOLT, ST4.8*16	9
14	DR50X-325	BOLT, FLANGED M8*16	2
15	DR50X-326	FLAT WASHER $\Phi$ 8	2
16	DR50X-327	FLAT WASHER $\Phi$ 6	5
17	DR50X-328	FLAT WASHER $\Phi$ 4	2
18	DR50X-329	RUBBER WASHER $\Phi$ 6	5
19	DR50X-330	NUT, LOCKING M4	2

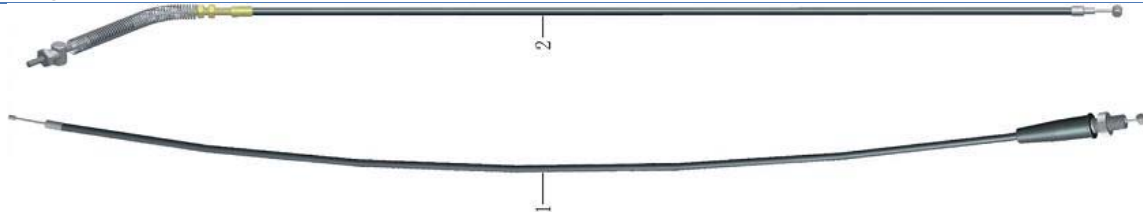
**Electrical [Image]**



**ELECTRICAL**

Item No	Part Number	Description	Qty
1	DR50X-331	WIRING HARNESS	1
2	DR50X-332	IGNITION COIL	1
3	DR50X-333	CDI	1
4	DR50X-334	KEY SWITCH	1

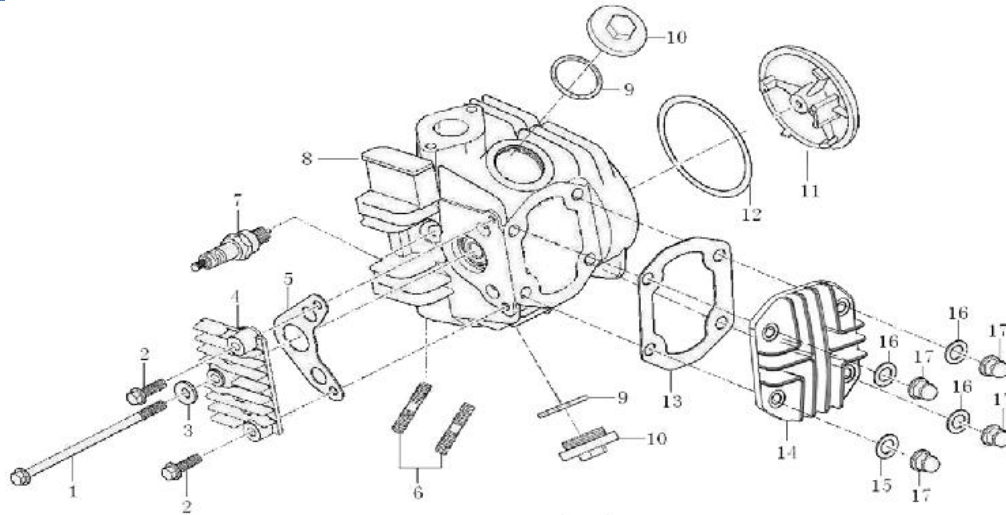
**Cables [Image]**



**CABLES**

Item No	Part Number	Description	Qty
1	DR50X-335	CABLE, THROTTLE	1
2	DR50X-336	CABLE, BRAKE	1

**Cylinder Head [Image]**

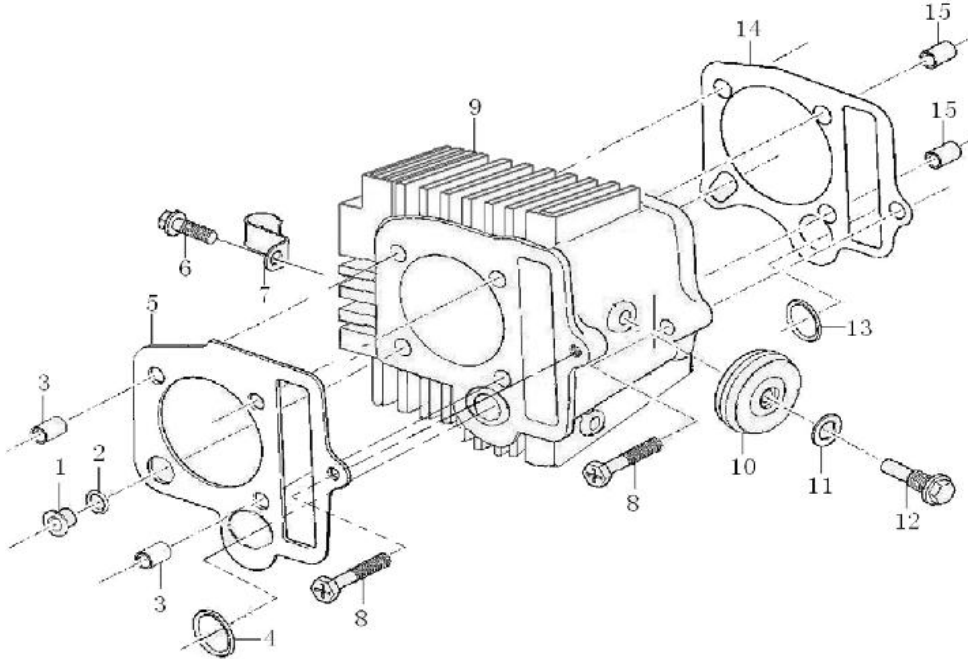


**CYLINDER HEAD**

Item No	Part Number	Description	Qty
1	DR50X-339	BOLT M6×110	1
2	DR50X-340	BOLT M6×20	2
3	DR50X-341	WASHER 6.5×1×12	1
4	DR50X-342	RIGHT COVER, CYLINDER HEAD	1
5	DR50X-343	GASKET,R.CYLINDER HEAD COVER	1
6	DR50X-344	BOLT M6×32	2
7	DR50X-345	SPARK PLUG	1
8	DR50X-346	CYLINDER HEAD ASSY	1
9	DR50X-347	O-RING 29.6×3.2	2
10	DR50X-348	COVER, VALVE CHAMBER	2

11	DR50X-349	LEFT COVER, CYLINDER HEAD	1
12	DR50X-350	GASKET,L,CYLINDER HEAD COVER	1
13	DR50X-351	GASKET, CYLINDER HEAD UPPER COVER	1
14	DR50X-352	UPPER COVER, CYLINDER HEAD	1
15	DR50X-353	WASHER 6.2x2x13	1
16	DR50X-354	WASHER 6.2x2x13	3
17	DR50X-355	NUT M6	4

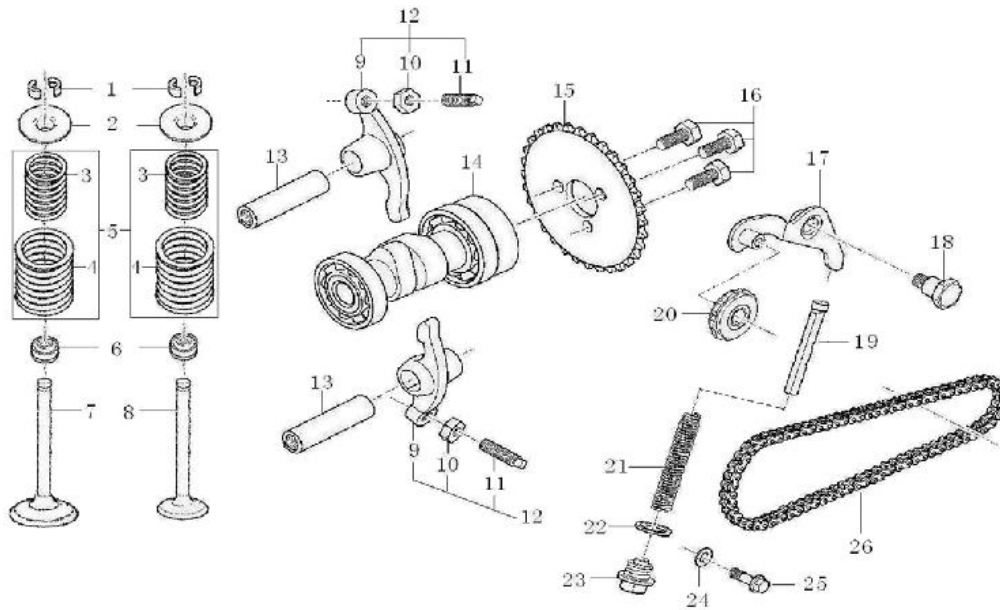
Cylinder [Image]



CYLINDER

Item No	Part Number	Description	Qty
1	DR50X-356	BUSH 9.5	1
2	DR50X-357	RECTANGLE RING 8x10.8x1.5	1
3	DR50X-358	PIN 8x14x6.3	2
4	DR50X-359	RECTANGLE RING 14x18.2x2.5	1
5	DR50X-360	GASKET ASSY,CYLINDER HEAD	1
6	DR50X-361	BOLT M6x16	1
7	DR50X-362	CLIP, HIGH VOLTAGE WIRE	1
8	DR50X-363	BOLT M6x23	2
9	DR50X-364	CYLINDER BLOCK ASSEMBLY	1
10	DR50X-365	GUIDE CHAIN ROLLER SET	1
11	DR50X-366	WASHER 8.5x1.5x14	1
12	DR50X-367	GUIDE CHAIN ROLLER PIN	1
13	DR50X-368	RECTANGLE RING 11.5x16x2.5	1
14	DR50X-369	GASKET,CYLINDER BLOCK	1
15	DR50X-370	PIN 8x12x6.3	2

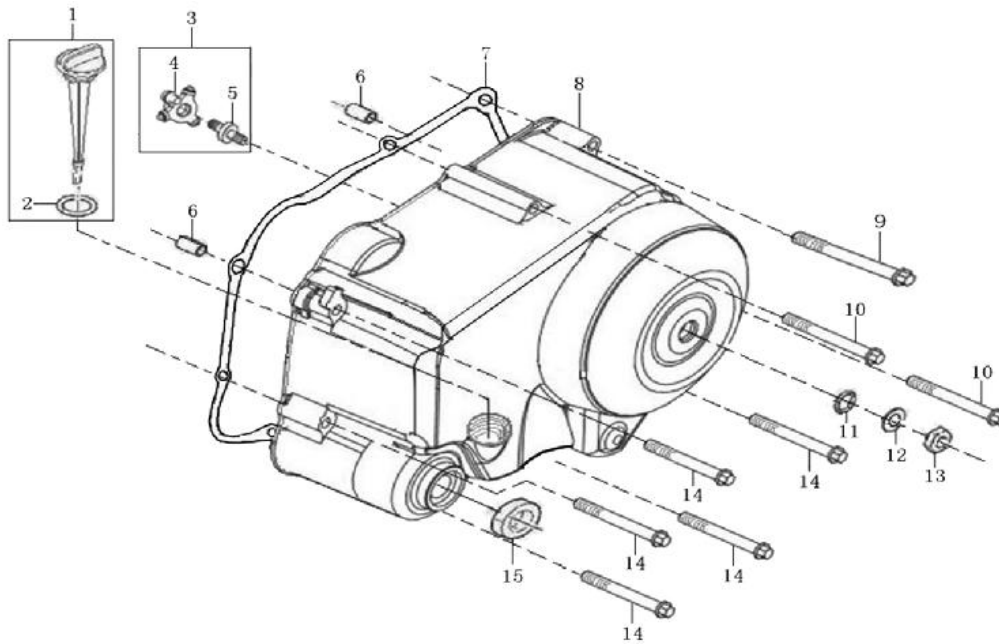
Valves [Image]



**VALVES**

Item No	Part Number	Description	Qty
1	DR50X-371	VALVE LOCKER	4
2	DR50X-372	SPRING SEAT	2
3	DR50X-373	VALVE INNER SPRING	2
4	DR50X-374	VALVE OUTER SPRING	2
5	DR50X-375	INNER SPRING,ASSY	2
6	DR50X-376	SEAL, VALVE STEM	2
7	DR50X-377	INTAKE VALVE	1
8	DR50X-378	EXHAUST VALVE	1
9	DR50X-379	ROCKER ARM	2
10	DR50X-380	NUT,VALVE CLEARANCE	2
11	DR50X-381	SCREW, VALVE CLEARANCE	2
12	DR50X-382	ROCKER ARM ASSEMBLY, VALVE	2
13	DR50X-383	ROCKER SHAFT	2
14	DR50X-384	GAMP SHAFT COMP	1
15	DR50X-385	TIMING DRIVEN SPROCKET	1
16	DR50X-386	BOLT M5×12	3
17	DR50X-387	CHAIN ADJUSTING SET	1
18	DR50X-388	AXLE, TENSIONER LEVER	1
19	DR50X-389	CHAIN TYHT SET	1
20	DR50X-390	LIFTER ASSY	1
21	DR50X-391	SPRING	1
22	DR50X-392	WASHER 14.5×1.5×20	1
23	DR50X-393	SEALING PLUG M14×1.5	1
24	DR50X-394	WASHER 6.2×1.5×13	1
25	DR50X-395	BOLT M6×18	1
26	DR50X-396	SPROKET CHAIN	1

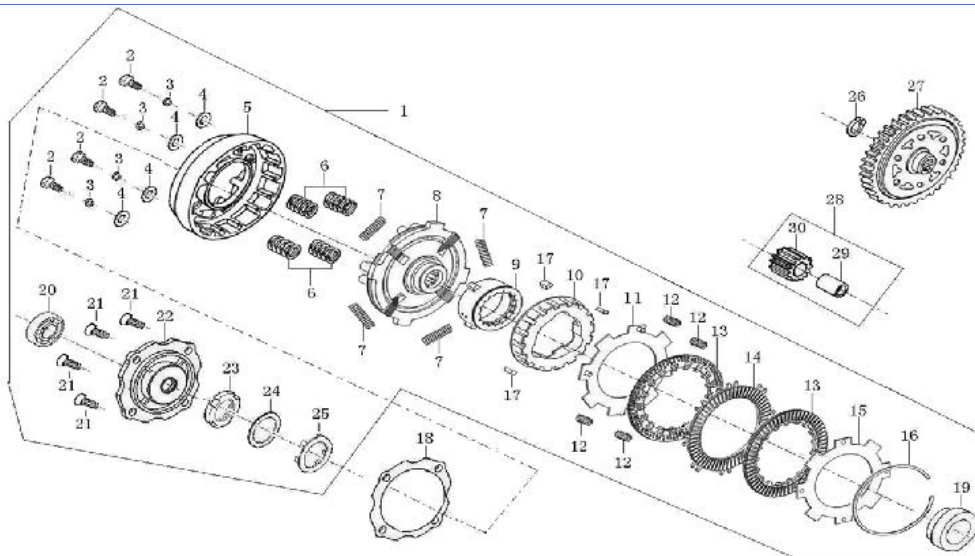
Right Crankcase Cover [Image]



**RIGHT CRANKCASE COVER**

Item No	Part Number	Description	Qty
1	DR50X-397	OIL RULER ASSY	1
2	DR50X-398	O-RING 18x3	1
3	DR50X-399	CLUTCH TAPPET	1
4	DR50X-400	CLUTCH TAPPET	1
5	DR50X-401	BOLT M8	1
6	DR50X-402	PIN 8x12x6.3	2
7	DR50X-403	GASKET, R.CRANKCASE COVER	1
8	DR50X-404	COVER COMP. RIGHT CRANKCASE	1
9	DR50X-405	BOLT M6x80	1
10	DR50X-406	BOLT M6x65	2
11	DR50X-407	O-RING 8x1.8	1
12	DR50X-408	WASHER phi8	1
13	DR50X-409	NUT M8	1
14	DR50X-410	BOLT M6x40	5
15	DR50X-411	OIL SEAL 13.8x24x5	1

**Clutch [Image]**

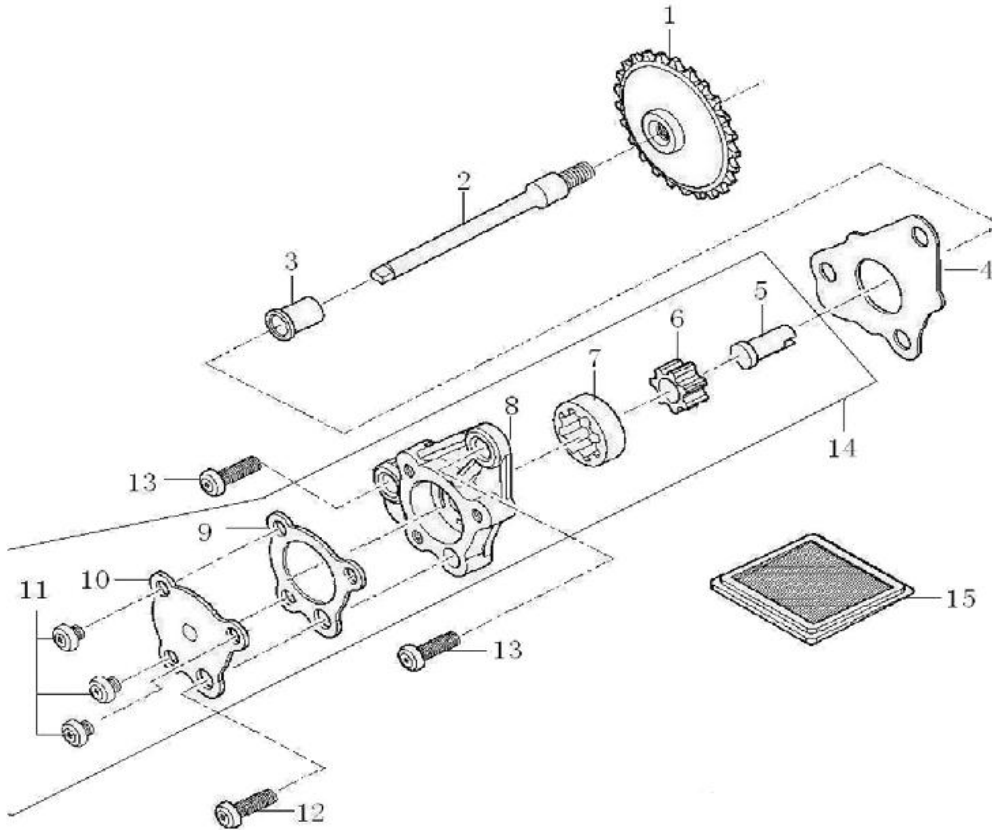


**CLUTCH**

Item No	Part Number	Description	Qty
---------	-------------	-------------	-----

1	DR50X-412	CLUTCH ASSY	1
23	DR50X-413	LOCK NUT, CLUTCH	1
24	DR50X-414	DISH WASHER, CLUTCH	1
25	DR50X-415	STOP WASHER, CLUTCH	1
26	DR50X-416	CIRCLIP	1
27	DR50X-417	DRIVEN GEAR COMP	1
28	DR50X-418	DRIVEN GEAR	1
29	DR50X-419	AXLE SLEEVE	1
30	DR50X-420	PRIMARY DRIVE GEAR	1

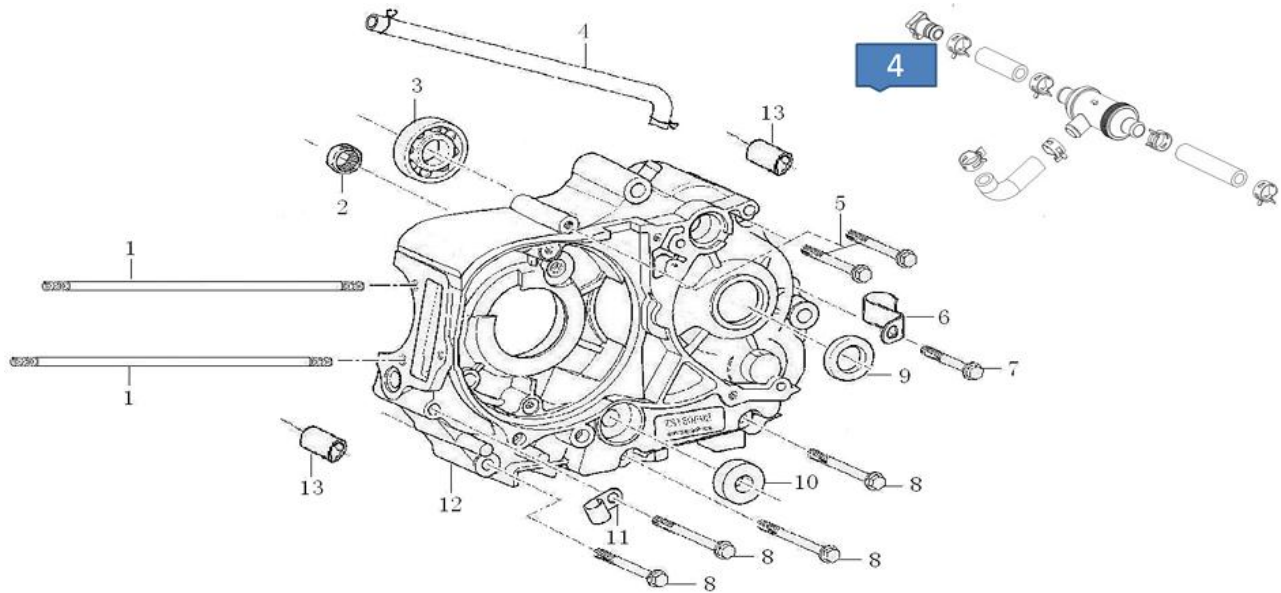
Oil Pump [Image]



OIL PUMP

Item No	Part Number	Description	Qty
1	DR50X-421	HUB DUMP CHAIN SPROCKET, OIL PUMP	1
2	DR50X-422	OIL PUMP SPROCKET SHAFT	1
3	DR50X-423	BUSH, SPROCKET	1
4	DR50X-424	GASKET,OIL PUMP	1
12	DR50X-425	SCREW M6×22	1
13	DR50X-426	SCREW M6×16	2
14	DR50X-427	OIL PUMP ASSY	1
15	DR50X-428	STRAINER,OIL FILTER	1

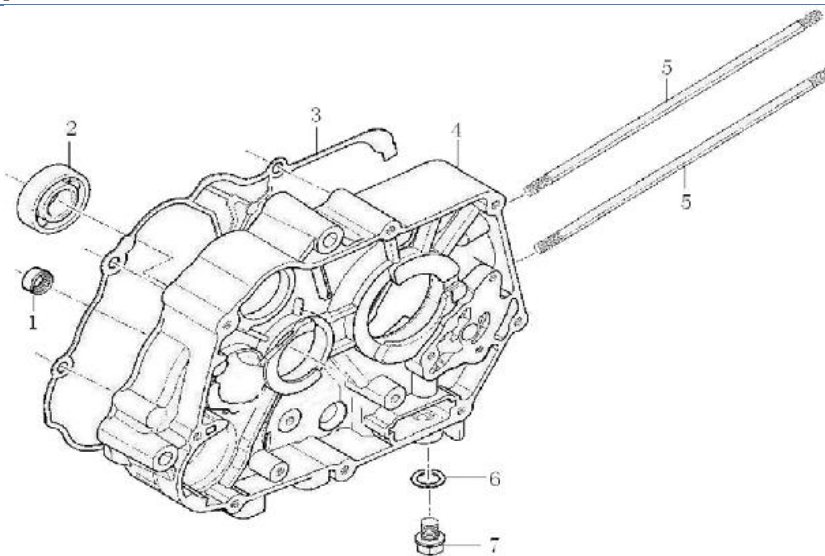
Left Crankcase [Image]



**LEFT CRANKCASE**

Item No	Part Number	Description	Qty
1	DR50X-429	CYLINDER STUD BOLT A	2
2	DR50X-430	BEARING(NK13.5×22×12)	1
3	DR50X-431	BEARING (6203)	1
4	DR50X-432	BREATH TUBE (油气分离器)	1
5	DR50X-433	BOLT M6×60	2
6	DR50X-434	CLIP, HIGH VOLTAGE WIRE	1
7	DR50X-435	BOLT M6×45	1
8	DR50X-436	BOLT M6×65	4
9	DR50X-437	OIL SEAL 17×29×5	1
10	DR50X-438	OIL-SEAL 11.6×24×10	1
11	DR50X-439	CLIP, OVERFLOW PIPE	1
12	DR50X-440	LEFT CRANKCASE BLOCK	1
13	DR50X-441	PIN 10×14	2

**Right Crankcase [Image]**



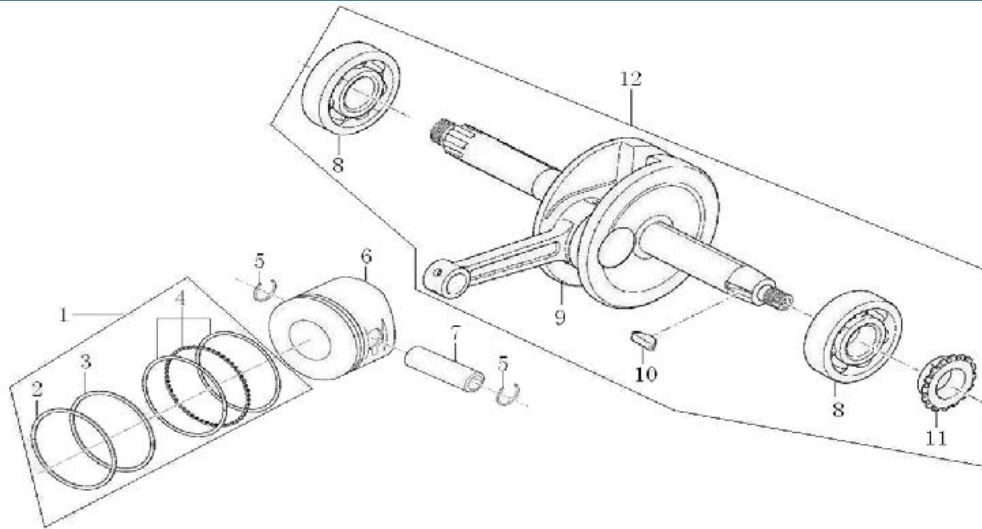
**RIGHT CRANKCASE**

Item No	Part Number	Description	Qty
1	DR50X-442	BEARING(NK13.5×22×12)	1
2	DR50X-443	BEARING (6203)	1
3	DR50X-444	GASKET,CRANKCASE	1
4	DR50X-445	RIGHT CRANKCASE BLOCK	1
5	DR50X-446	CYLINDER STUD BOLT B	2



6	DR50X-447	WASHER 12.4×2×20	1
7	DR50X-448	OIL DRAIN PLUG	1

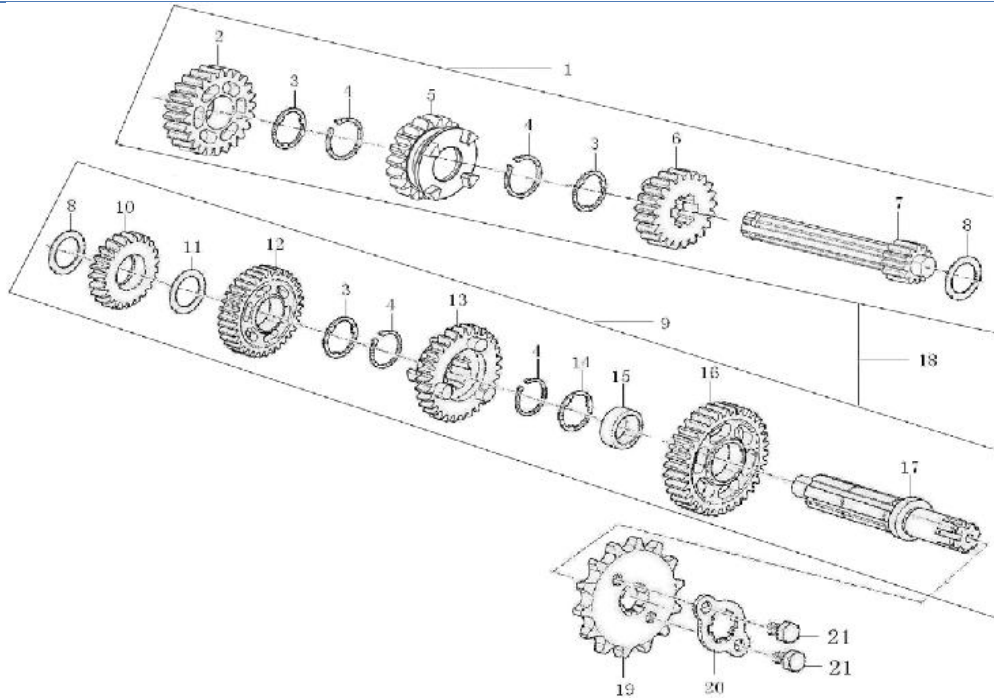
**Crankshaft [Image]**



**CRANKSHAFT**

Item No	Part Number	Description	Qty
1	DR50X-449	PISTON RING COMP	1
5	DR50X-453	CHECK RING, PISTON PIN	2
6	DR50X-454	PISTON	1
7	DR50X-455	PIN PISTON	1
12	DR50X-456	CRANKSHAFT CONNECTING-ROD ASSY	1

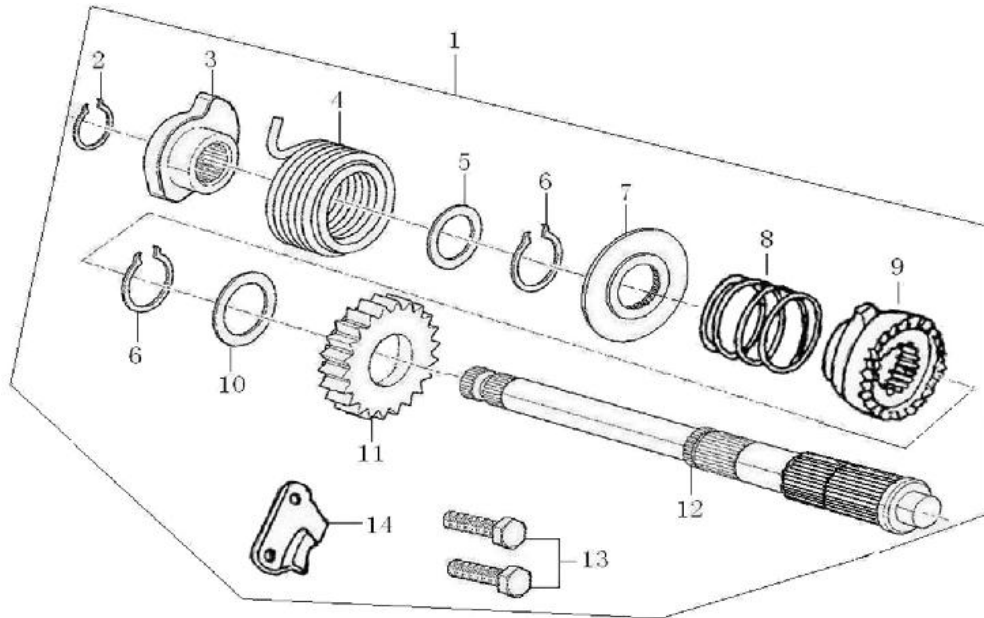
**Transmission [Image]**



**TRANSMISSION**

Item No	Part Number	Description	Qty
1	DR50X-457	MAIN SHAFT, TRANSMISSION	1
9	DR50X-458	COUNTERSHAFT TRANSMISSION	1
18	DR50X-459	TRANSMISSION MAIN, COUNTER SHAFT	1
19	DR50X-460	DRIVE SPROCKET	1
20	DR50X-461	FIXING PLATE,DRIVE SPROCKET	1
21	DR50X-462	BOLT M6×10	2

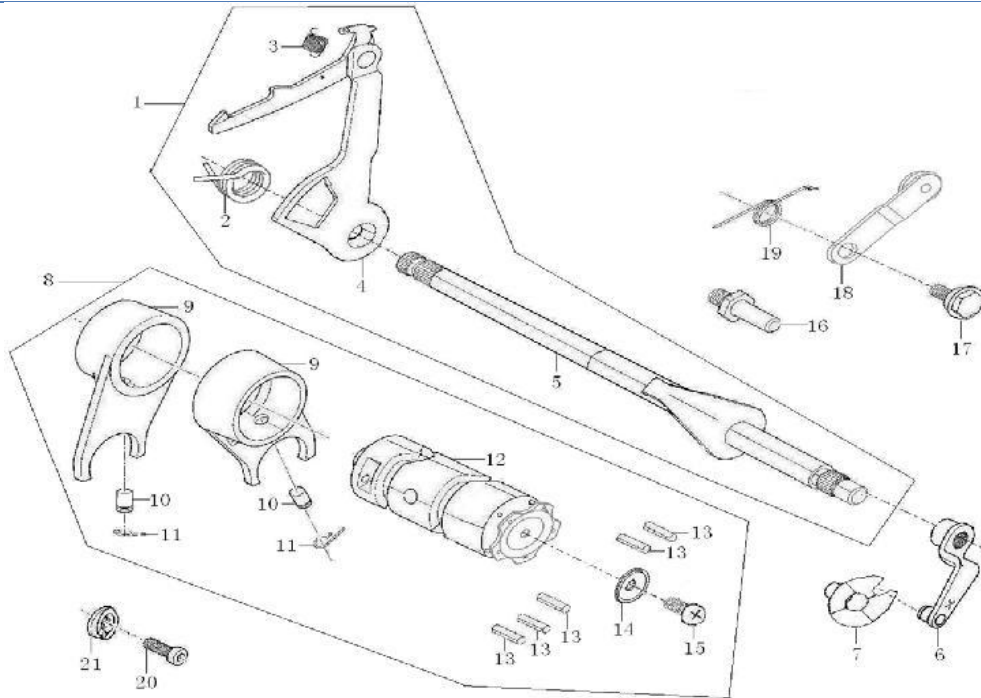
**Kickstarter [Image]**



**KICKSTARTER**

Item No	Part Number	Description	Qty
1	DR50X-463	KICK STARTING SHAFT ASSEMBLY	1

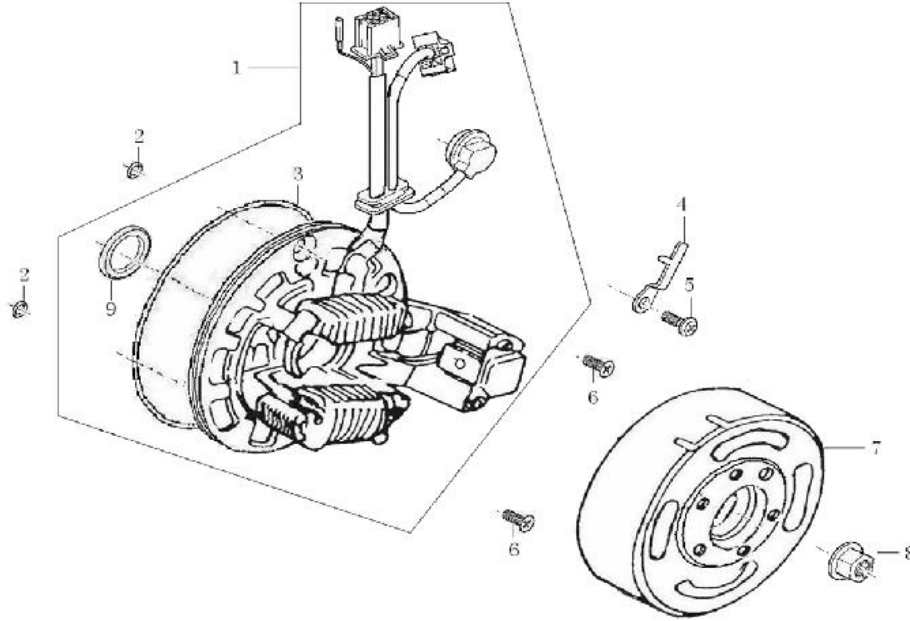
**Gearshift [Image]**



**GEARSHIFT**

Item No	Part Number	Description	Qty
1	DR50X-464	GEARSHIFT LEVER COMP	1
6	DR50X-465	CONTROLLING ARM ASSEMBLY, CLUTCH	1
7	DR50X-466	CAM PLATE ASSEMBLY, CLUTCH	1
8	DR50X-467	GEARSHIFT DRUM COMP	1
16	DR50X-468	BOLT, RETURN SPRINGN FIXING 8×11	1
17	DR50X-469	BOLT FIXING PLATE	1
18	DR50X-470	LOCATING PLATE ASSY	1
19	DR50X-471	SPRING, LOCATING PLATE	1
20	DR50X-472	SCREW	1
21	DR50X-473	CONTACT, CEARINDICATION	1

Magneto [Image]



MAGNETO

Item No	Part Number	Description	Qty
	DR50X-478	FUEL FILTER	1
1	DR50X-479	STATOR ASSY,MAGNETO	1
2	DR50X-480	O-RING 6.5x1.8	2
3	DR50X-481	O-RING 106.8x2	1
4	DR50X-482	GEARSHIFT SWITCH PRESSING PLATE	1
5	DR50X-483	SCREW M6x12	1
6	DR50X-474	SCREW M6x16	2
7	DR50X-475	ROTOR ASSY,MAGNETO	1
8	DR50X-476	NUT	1
9	DR50X-477	OIL SEAL 19x30x5	1